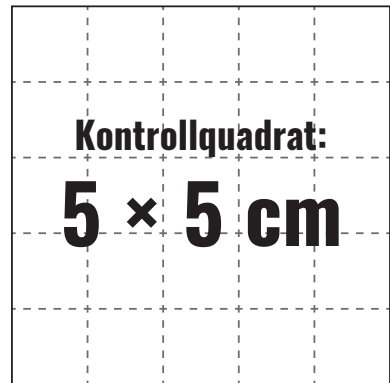


A0

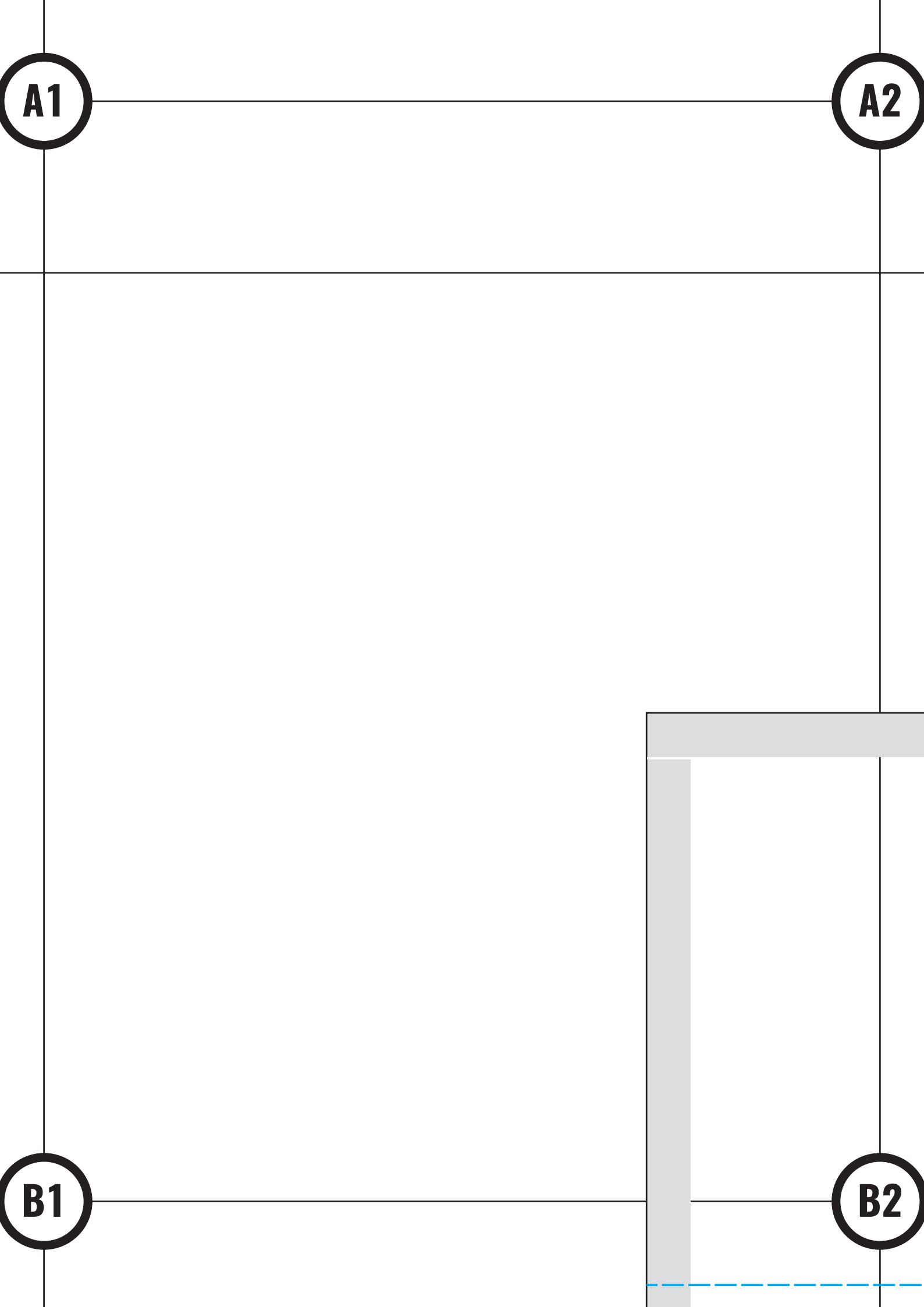
A1



Verlängern/Kürzen möglich

B0

B1



A1

A2

B1

B2

A2

A3

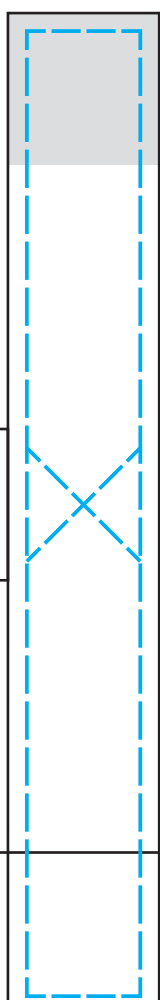
Bruch/Fadenlauf/Vordere Mitte



Position:
Tasche



Position:
Hakenband



Position:
Horizontales Band

B2

B3

A3

A4

1 *LeBoek*

(Einheitsgröße)

SCHÜRZE

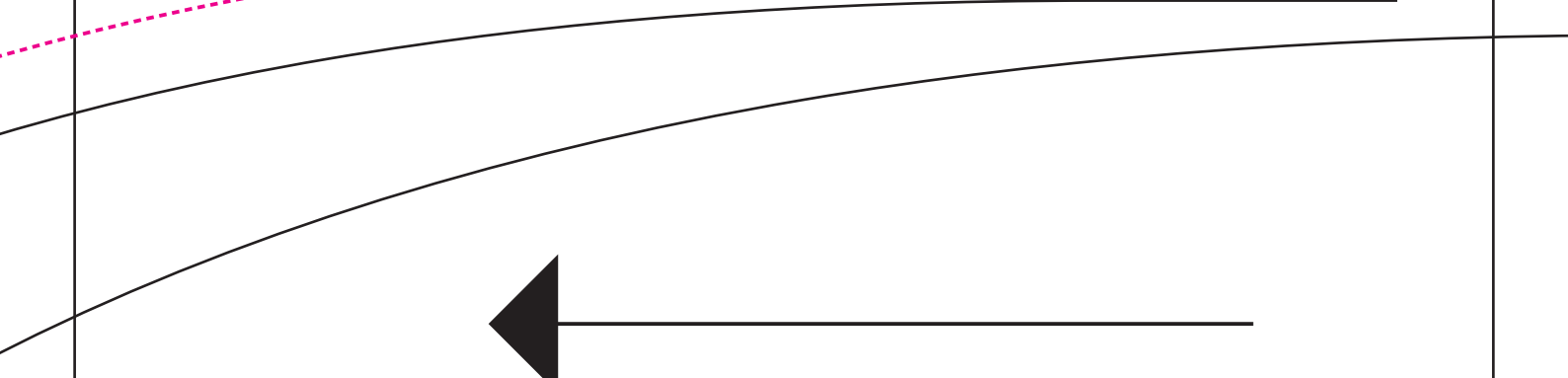
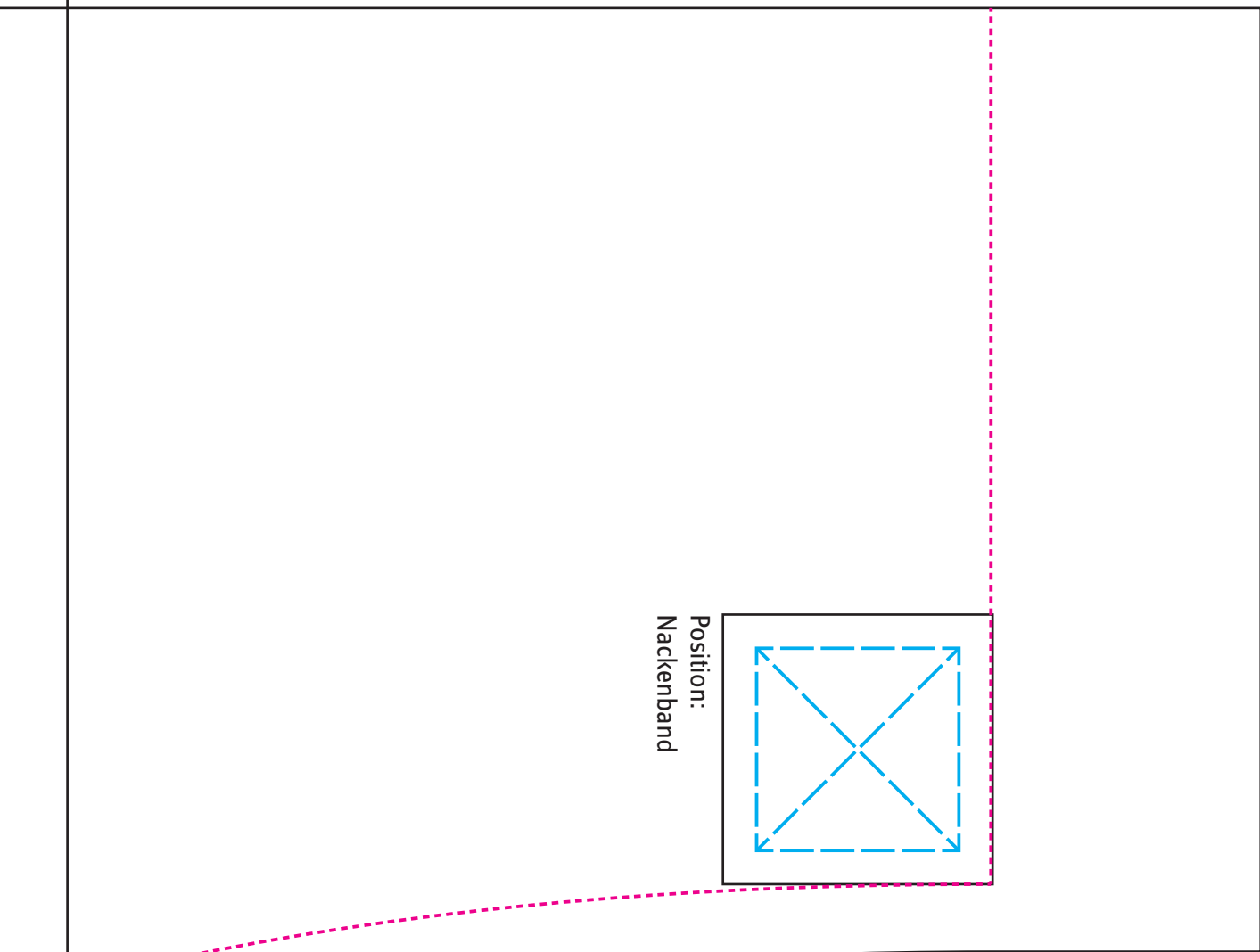
1x im Bruch zuschneiden,
NZG/SZG sind enthalten
©2018, pedilu

B3

B4

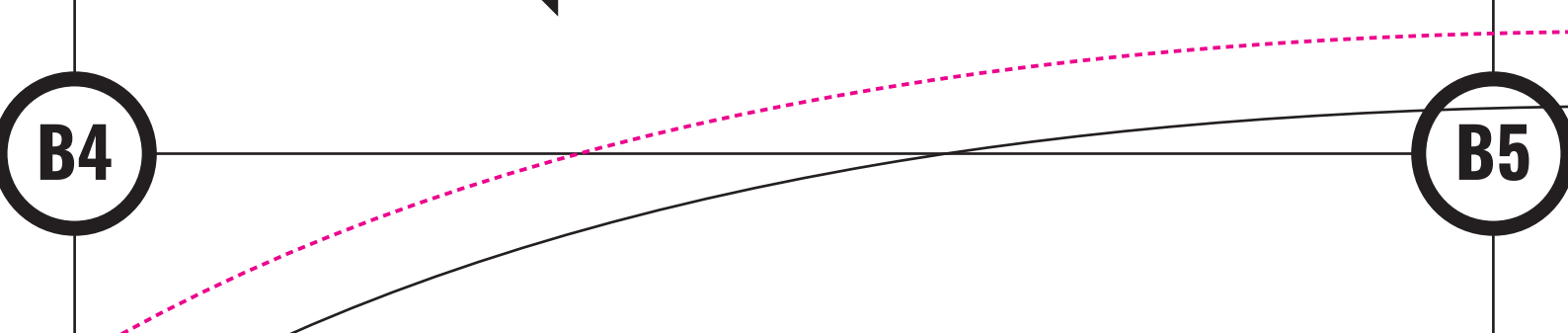
A4

A5



B4

B5



A5

A6

Legende

Schnittkante

Falt-/Nahtkante

Steppnähte

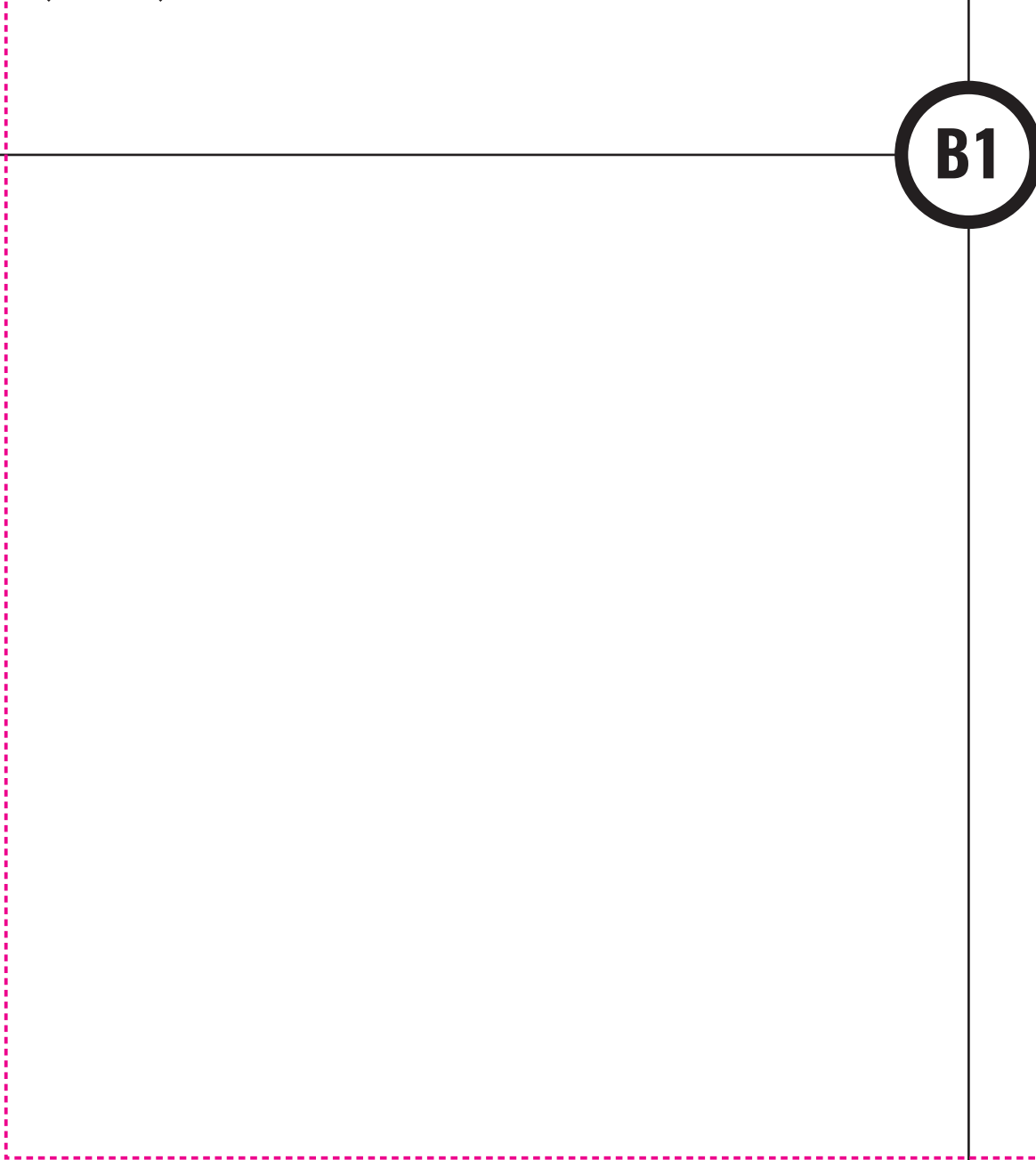
oben

B5

B6

B0

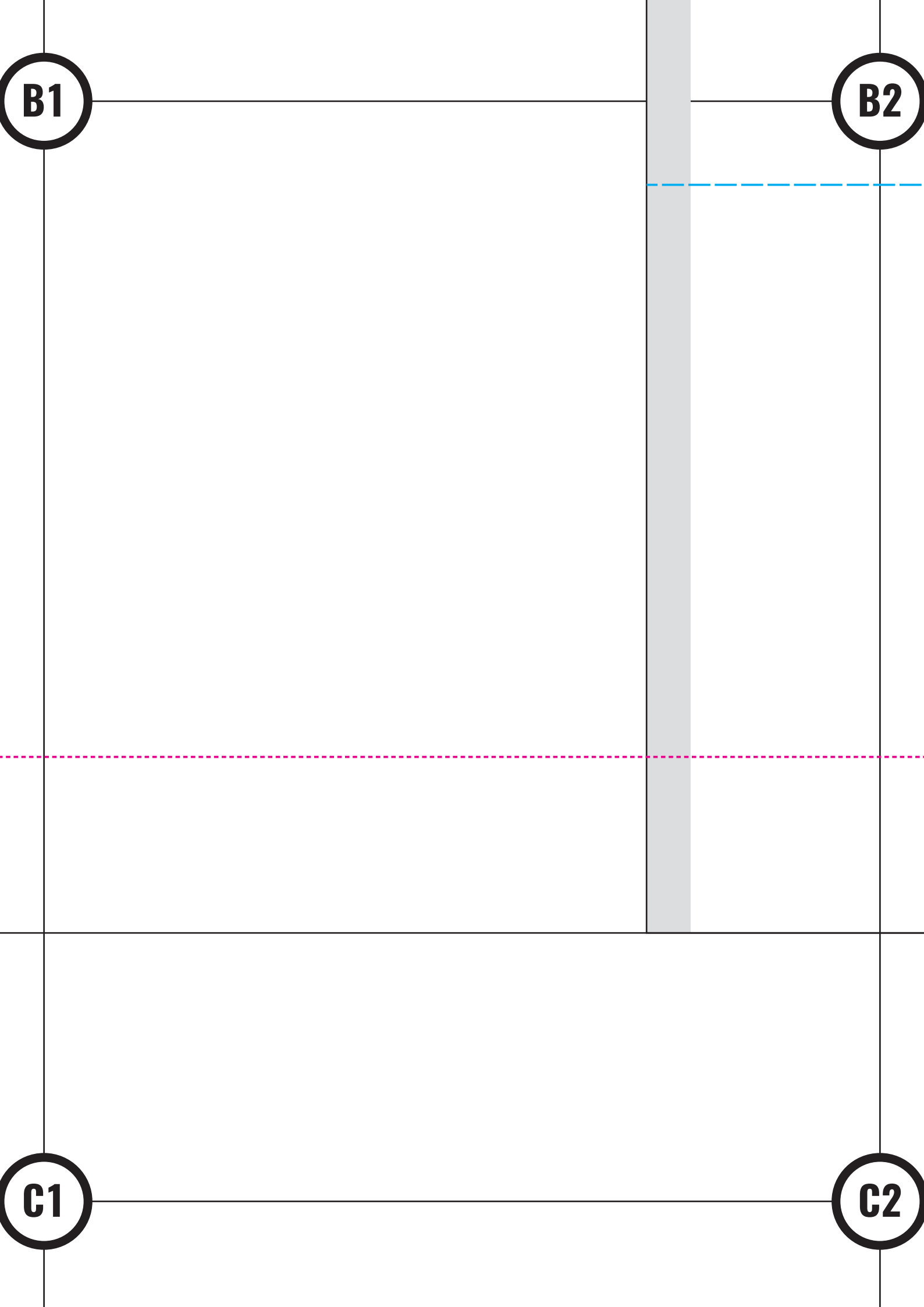
B1



©2018, pedilu, pedilu.com - in Kooperation mit snaply.de
#LeCook

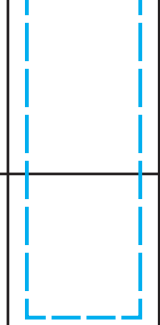
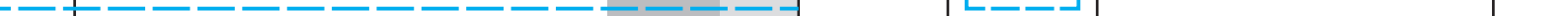
C0

C1

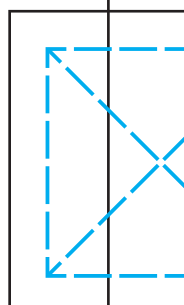


B2

B3



Position:
Seitenbindeband

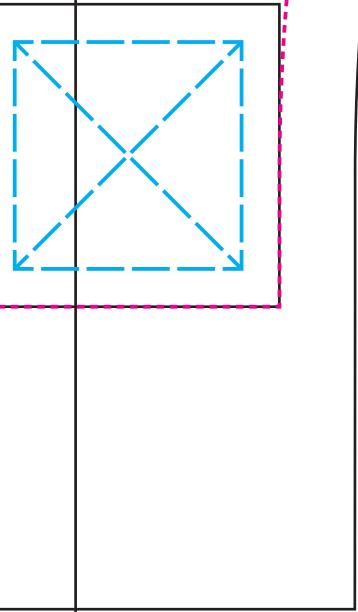


C2

C3

B3

B4



3 LeGoek

(Einheitsgröße)

BELEG

2x gegengleich zuschneiden,
NZG/SZG sind enthalten
©2018, pedilu

Seite

C3

C4

B4

B5

2 *LeCook*

(Einheitsgröße)

TASCHE

1× zuschneiden,
NZG/SZG sind enthalten

©2018, *pedilu*

Auf linke Seite auflegen,
um rechte Tasche zu erhalten

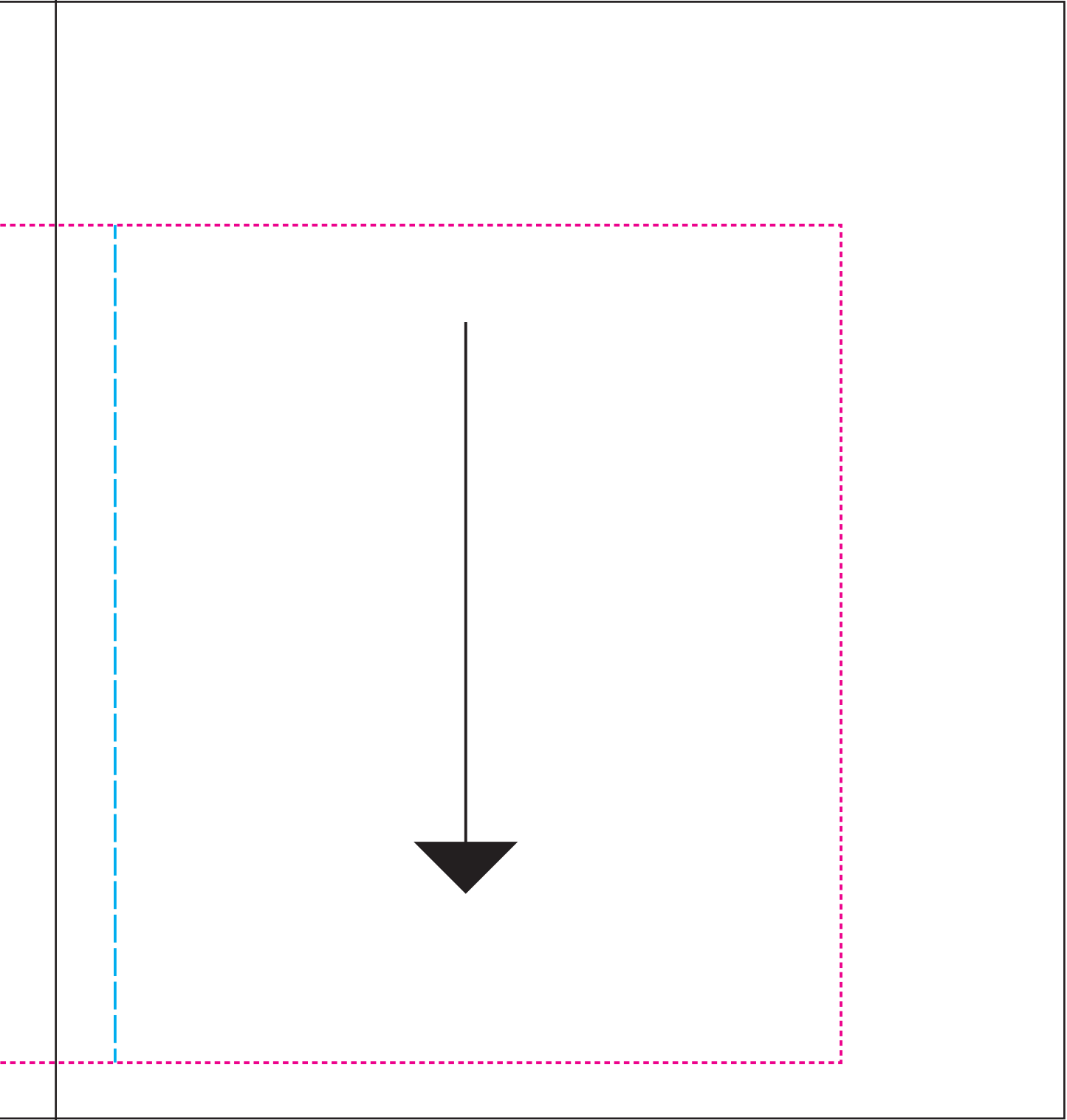
C4

C5



B5

B6



C5

C6