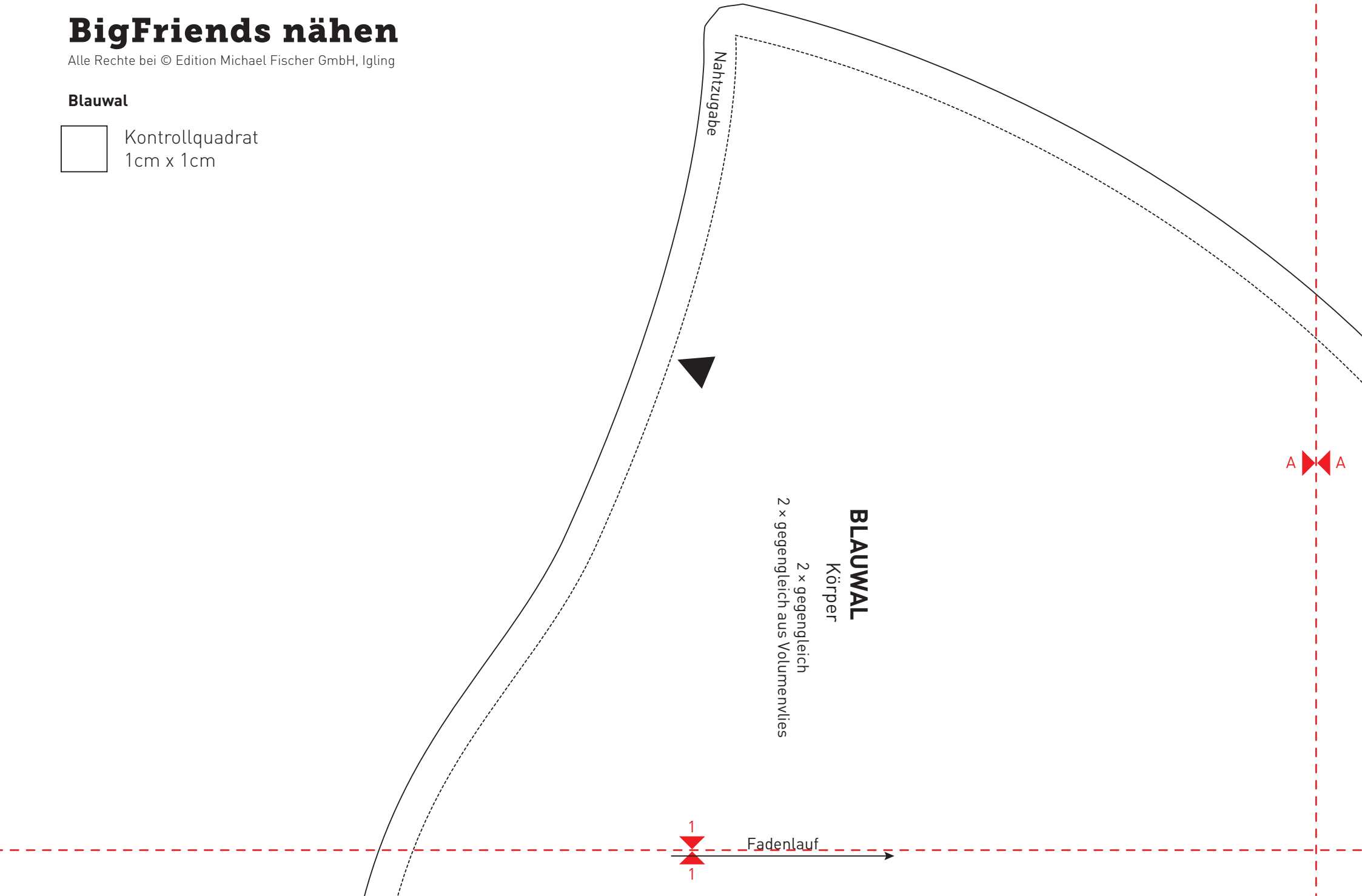


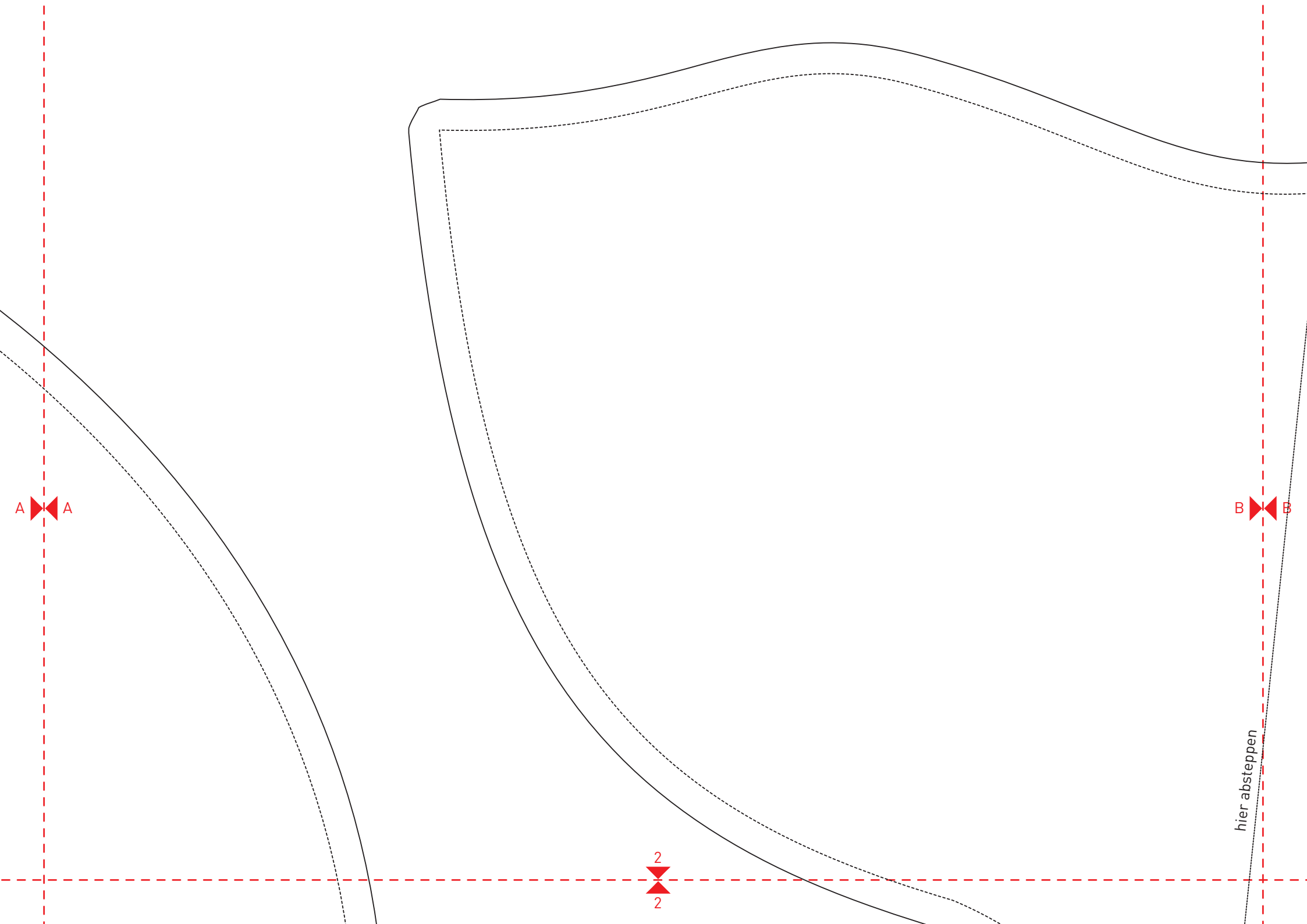
# BigFriends nähen

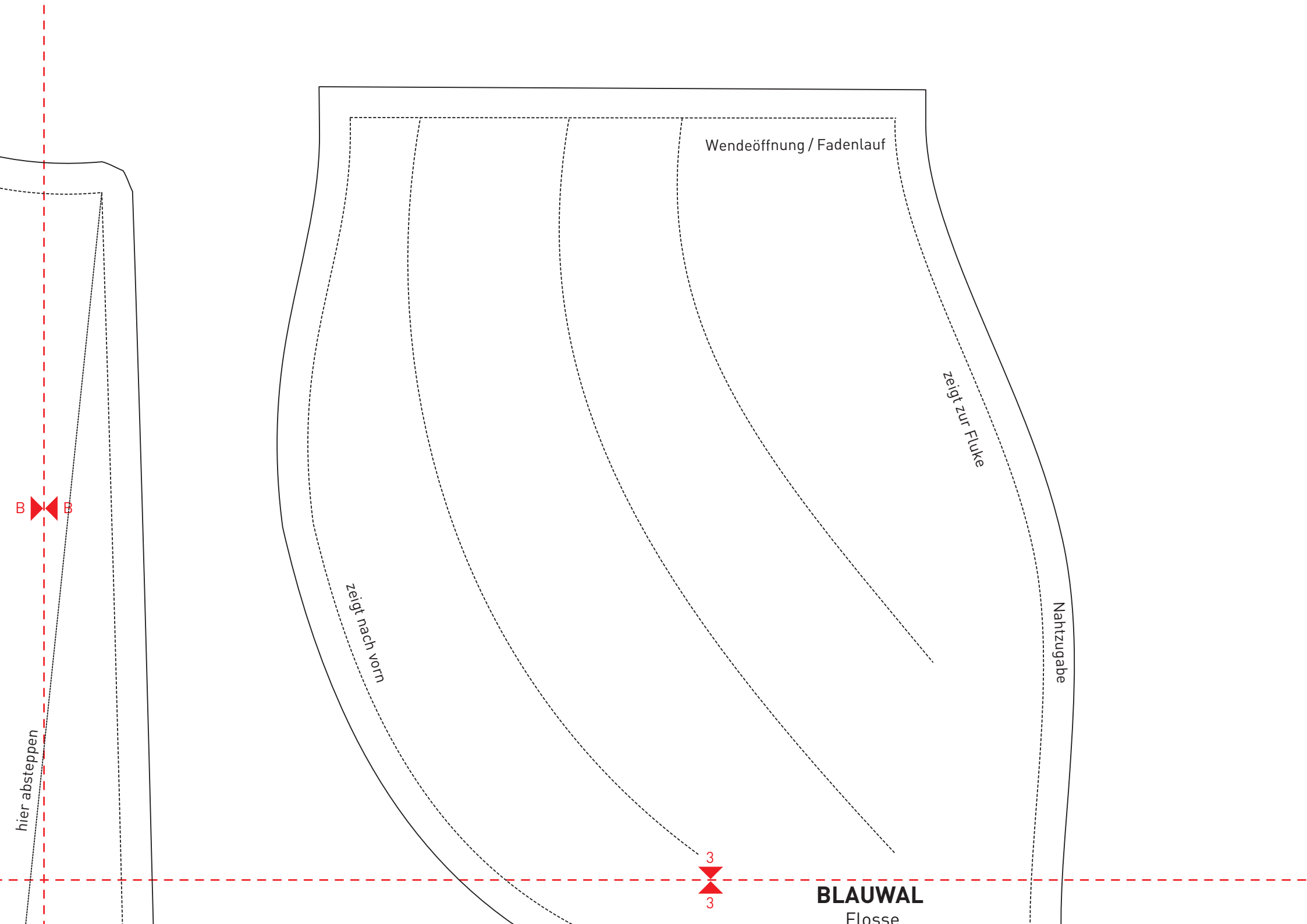
Alle Rechte bei © Edition Michael Fischer GmbH, Igling

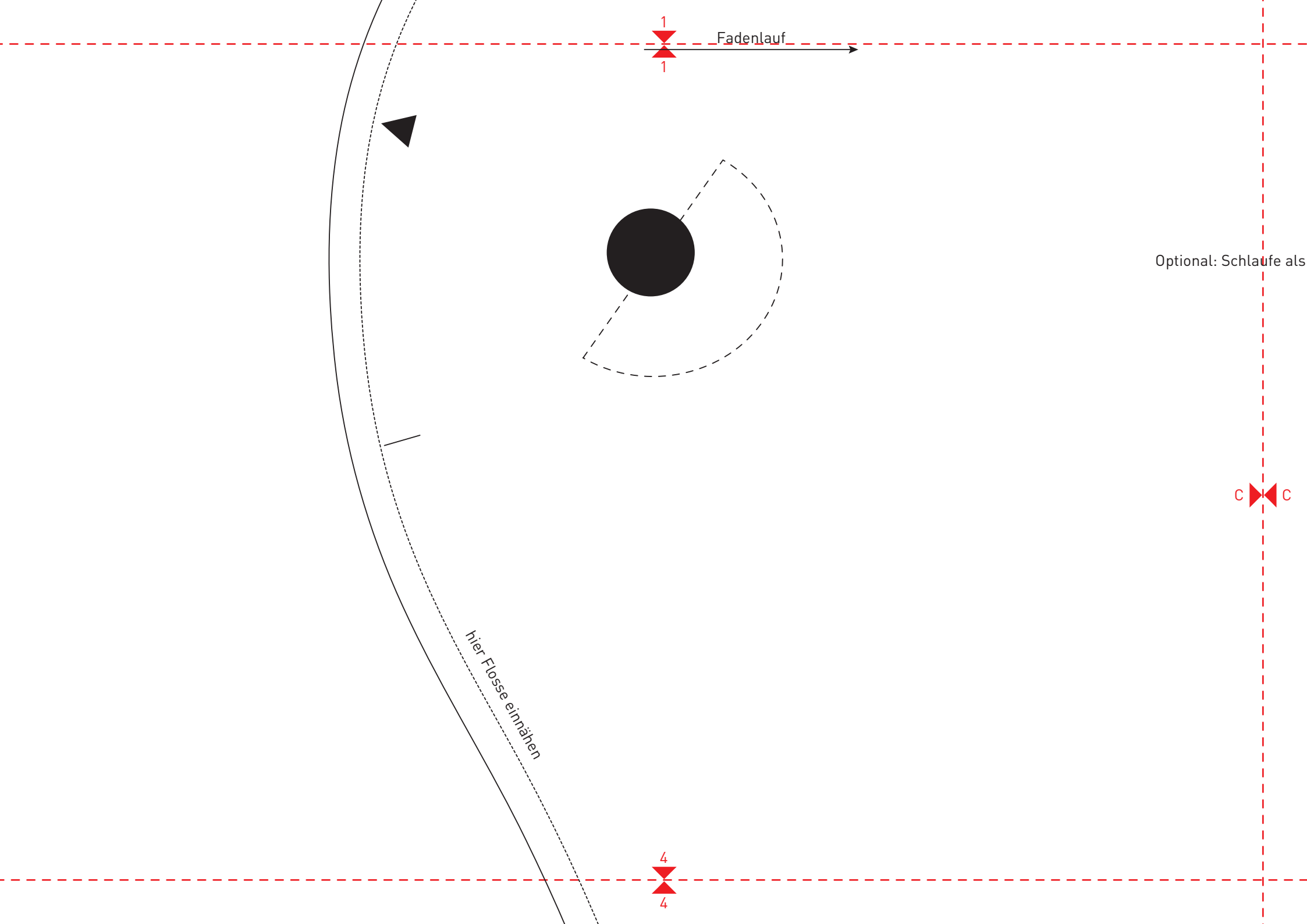
## Blauwal

 Kontrollquadrat  
1cm x 1cm









Fadenlauf

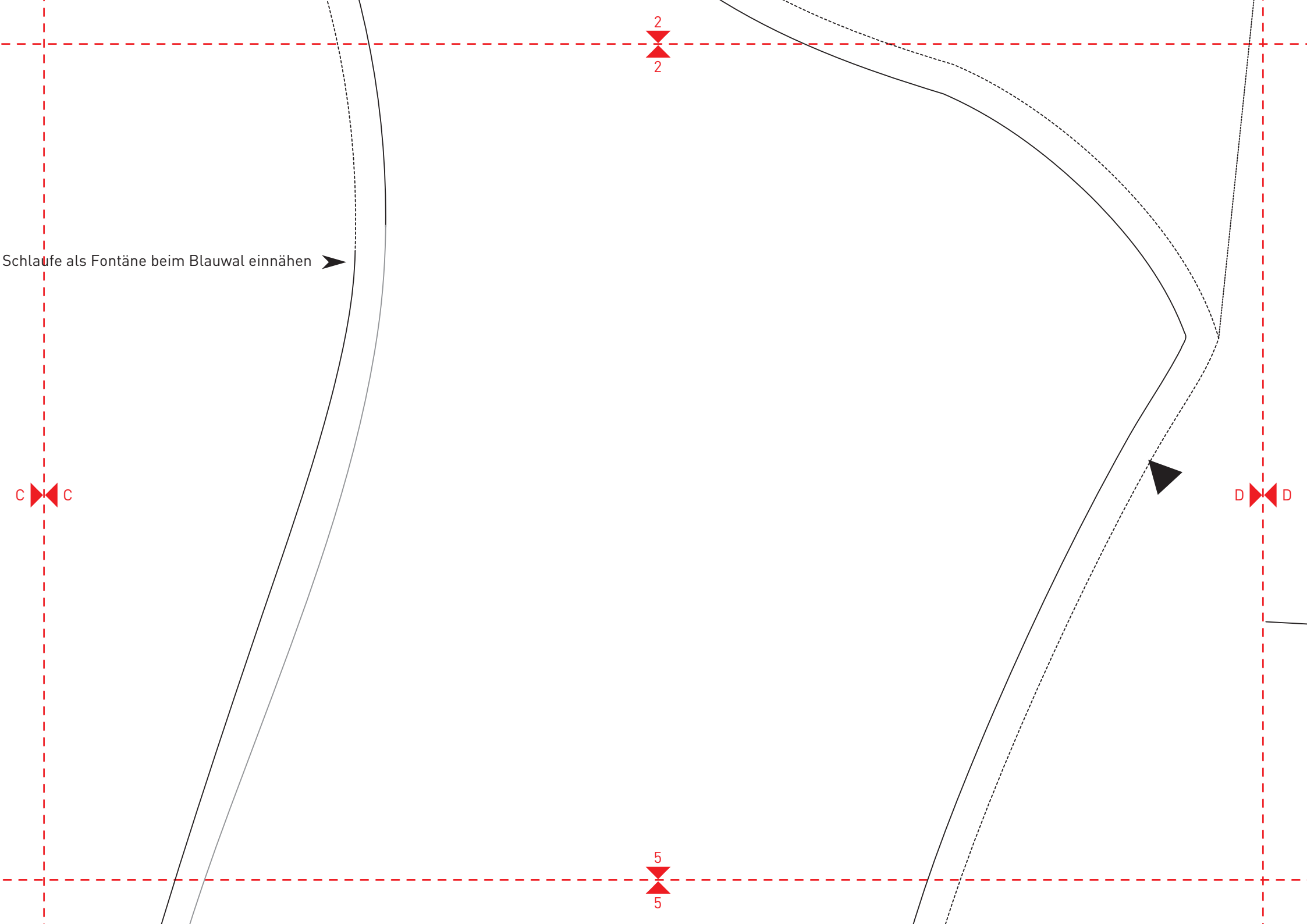
Optional: Schlaufe als

hier Flose einnähen

1  
1

4  
4

C C



Schlaufe als Fontäne beim Blauwal einnähen

C C

D D

2  
2

5  
5

3

3

# BLAUWAL

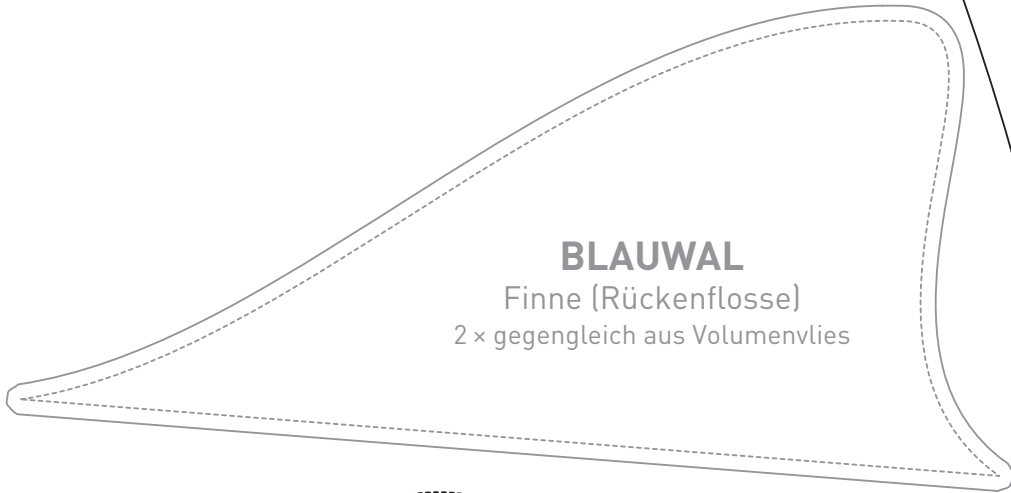
Flosse

4 x zuschneiden, je 2 x gegengleich  
2 x gegengleich aus Volumenvlies

D D

6

6



**BLAUWAL**  
Finne (Rückenflosse)  
2 x gegengleich aus Volumenvlies

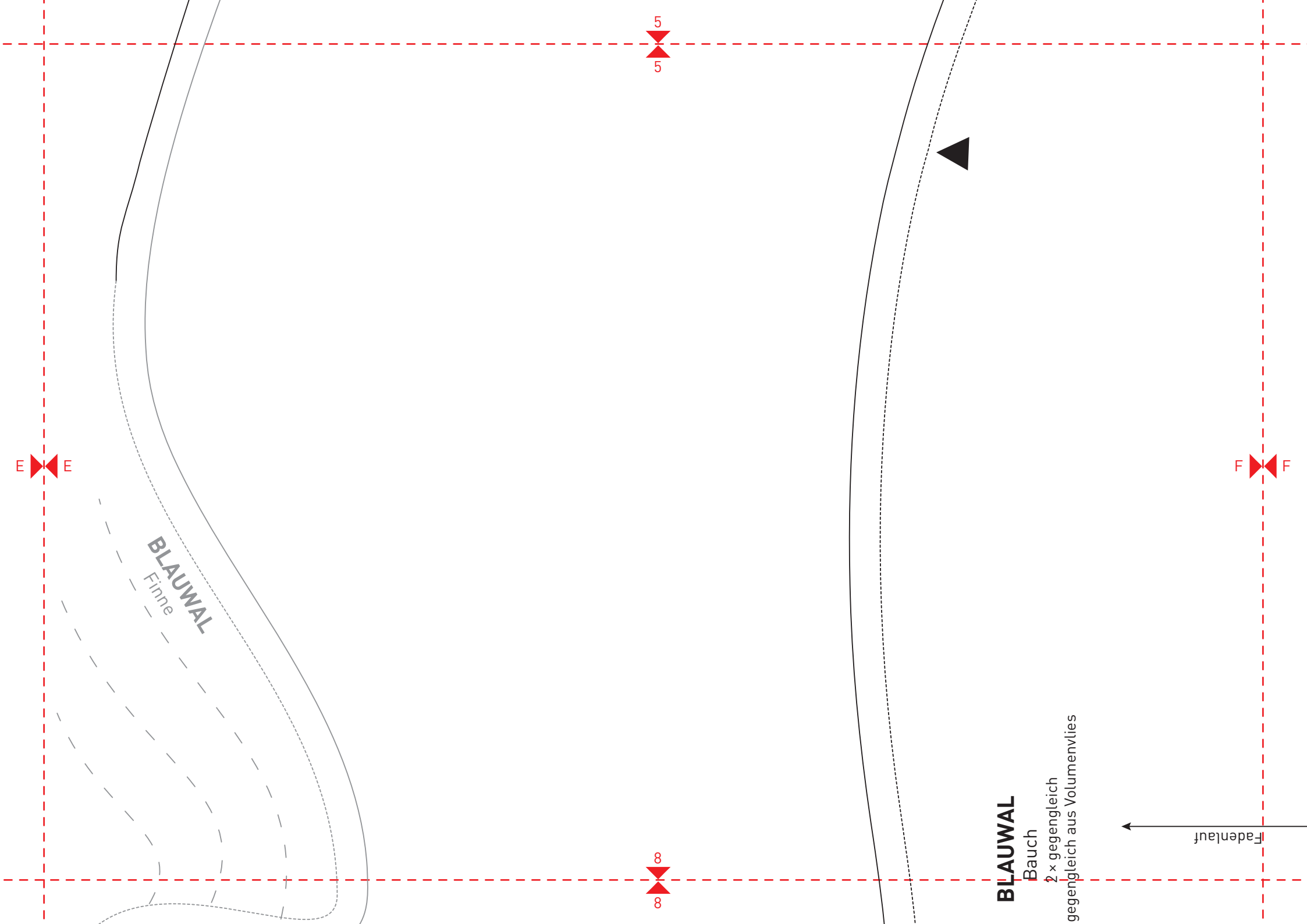


**BLAUWAL**  
Augenabdeckung

4  
4

E E

7  
7



E E

5

5

F F

8

8

**BLAUWAL**  
Finne

**BLAUWAL**  
Bauch  
2 x gegengleich  
gegengleich aus Volumenvlies

Fadenlauf





6

6

F

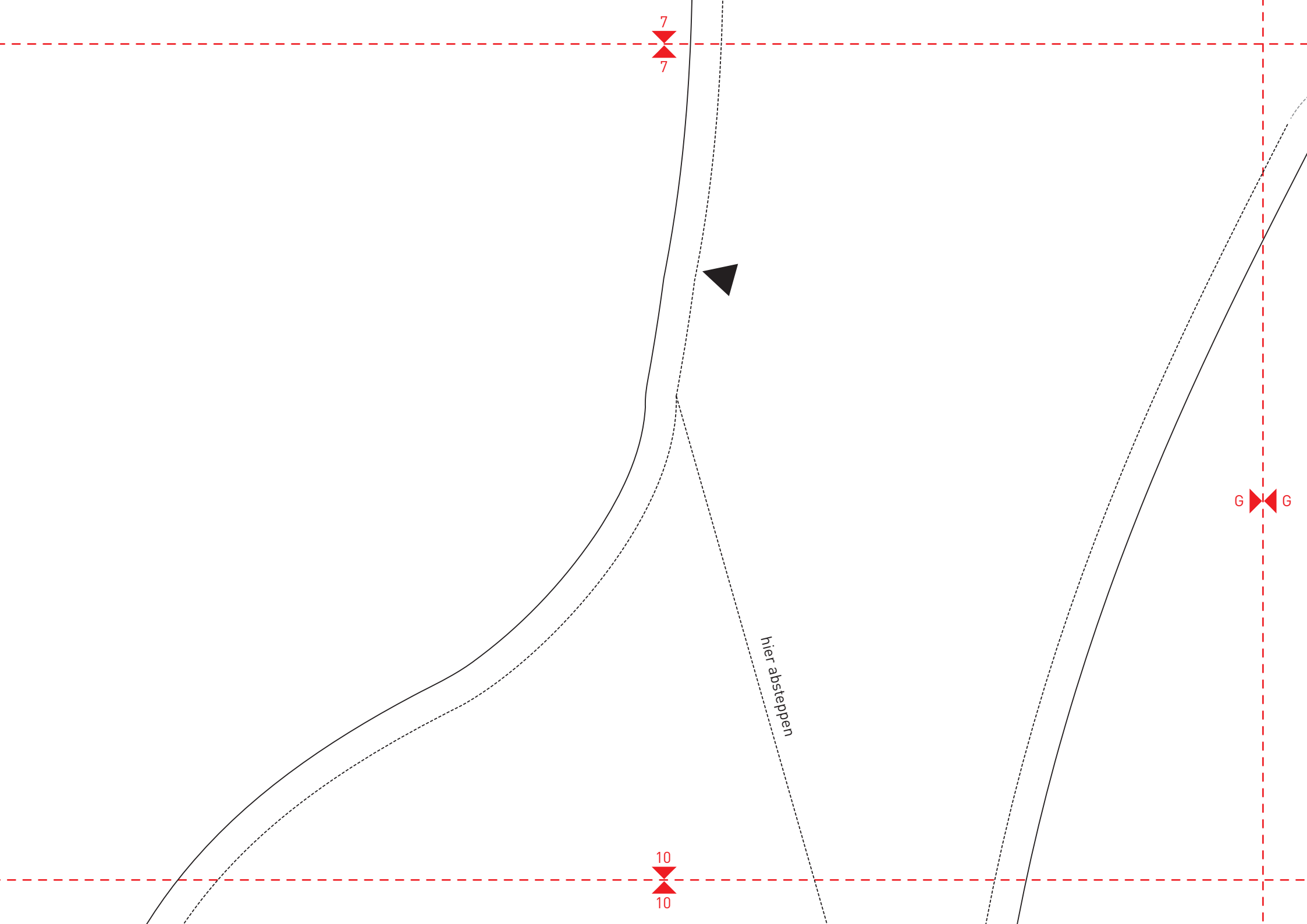
F

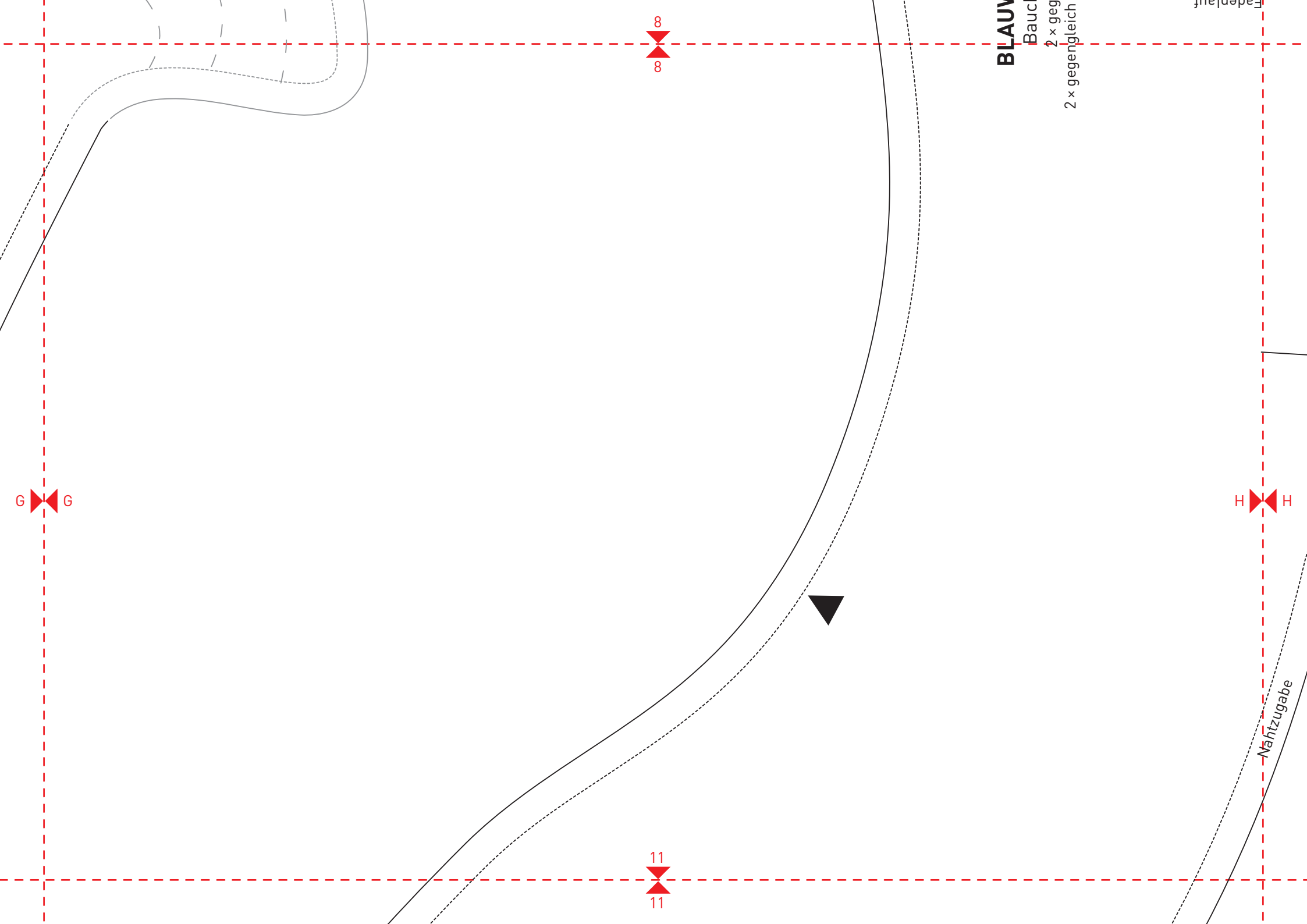
Wendeöffnung

Faden

9

9





**BLAU**

Bauch

2 x geg

2 x gegenleich

Fadenlauf

8

11

G

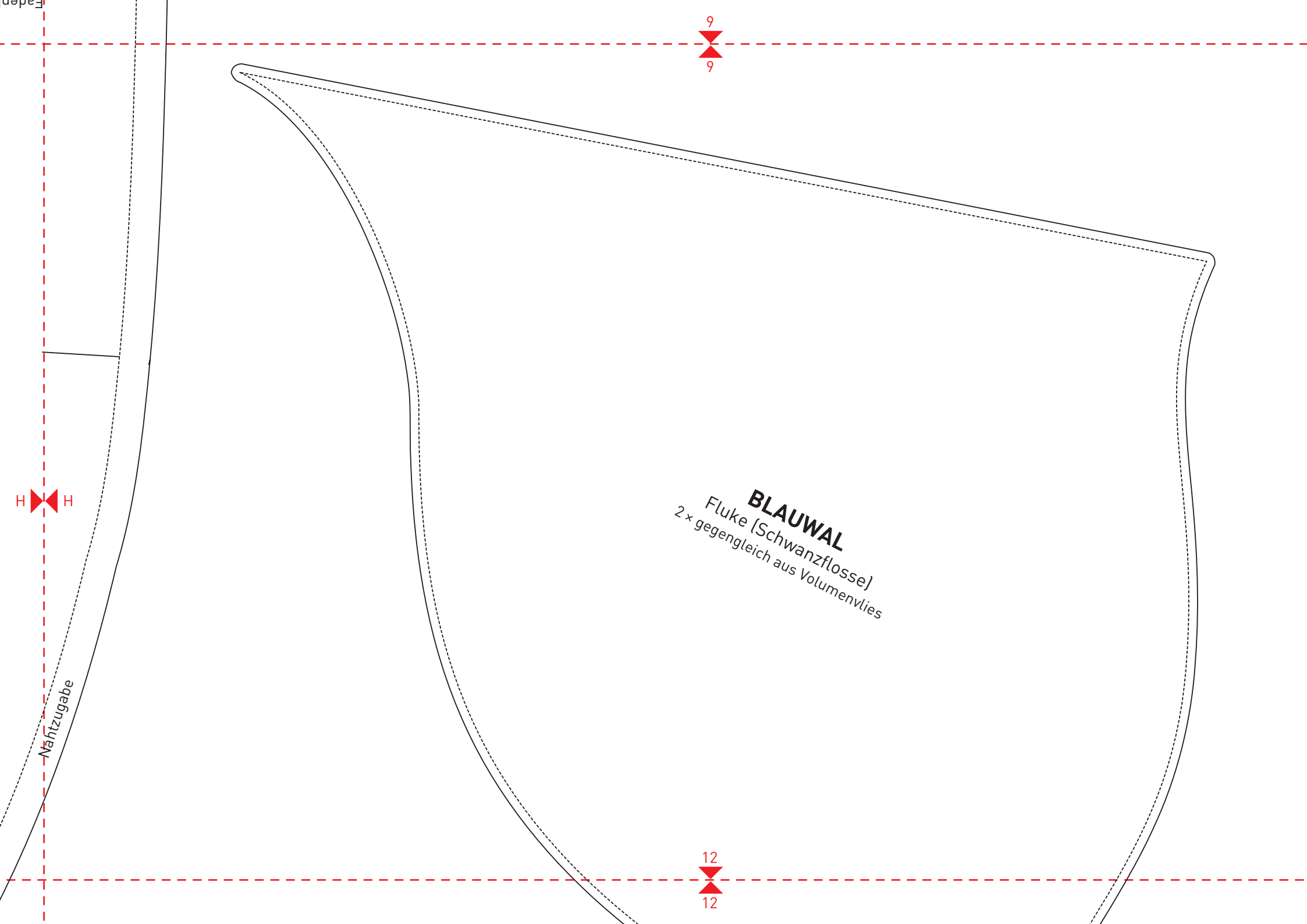
G

H

H

Nahzugabe





9

9

H

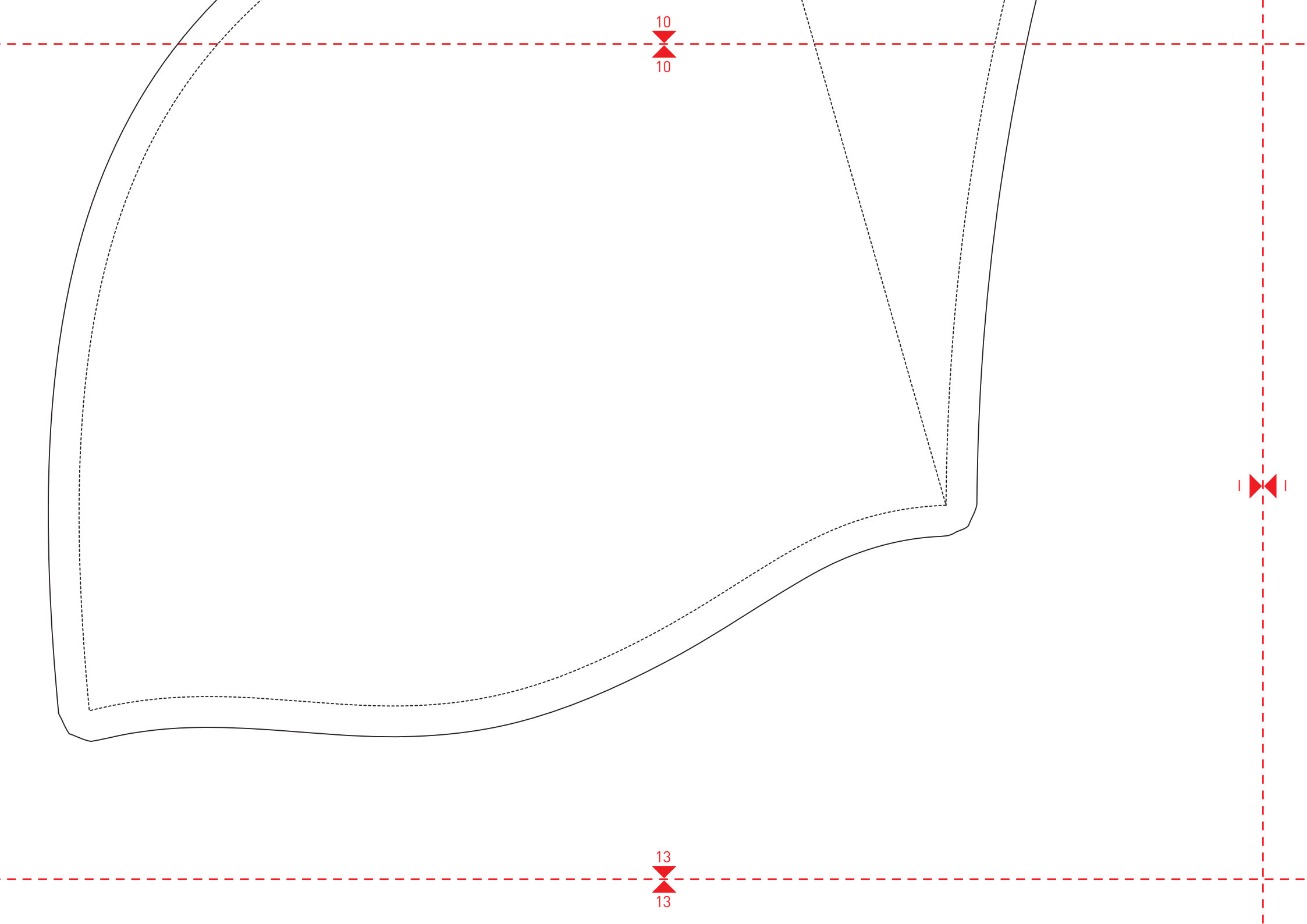
H

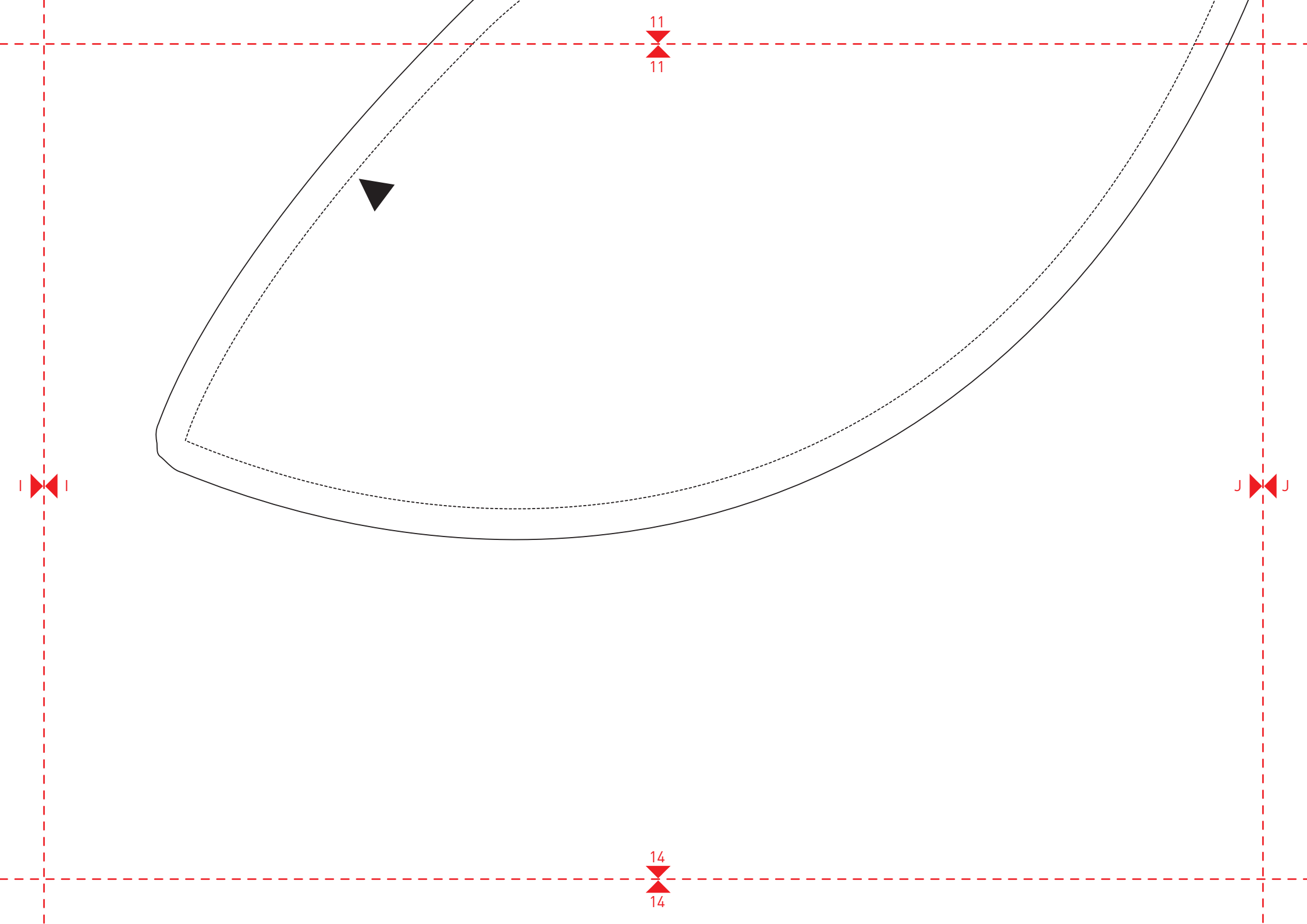
12

12

**BLAUWAL**  
Fluke (Schwanzflosse)  
2 x gegengleich aus Volumenvlies

Nähtzugabe





I

J

11

14



