

HEJ.

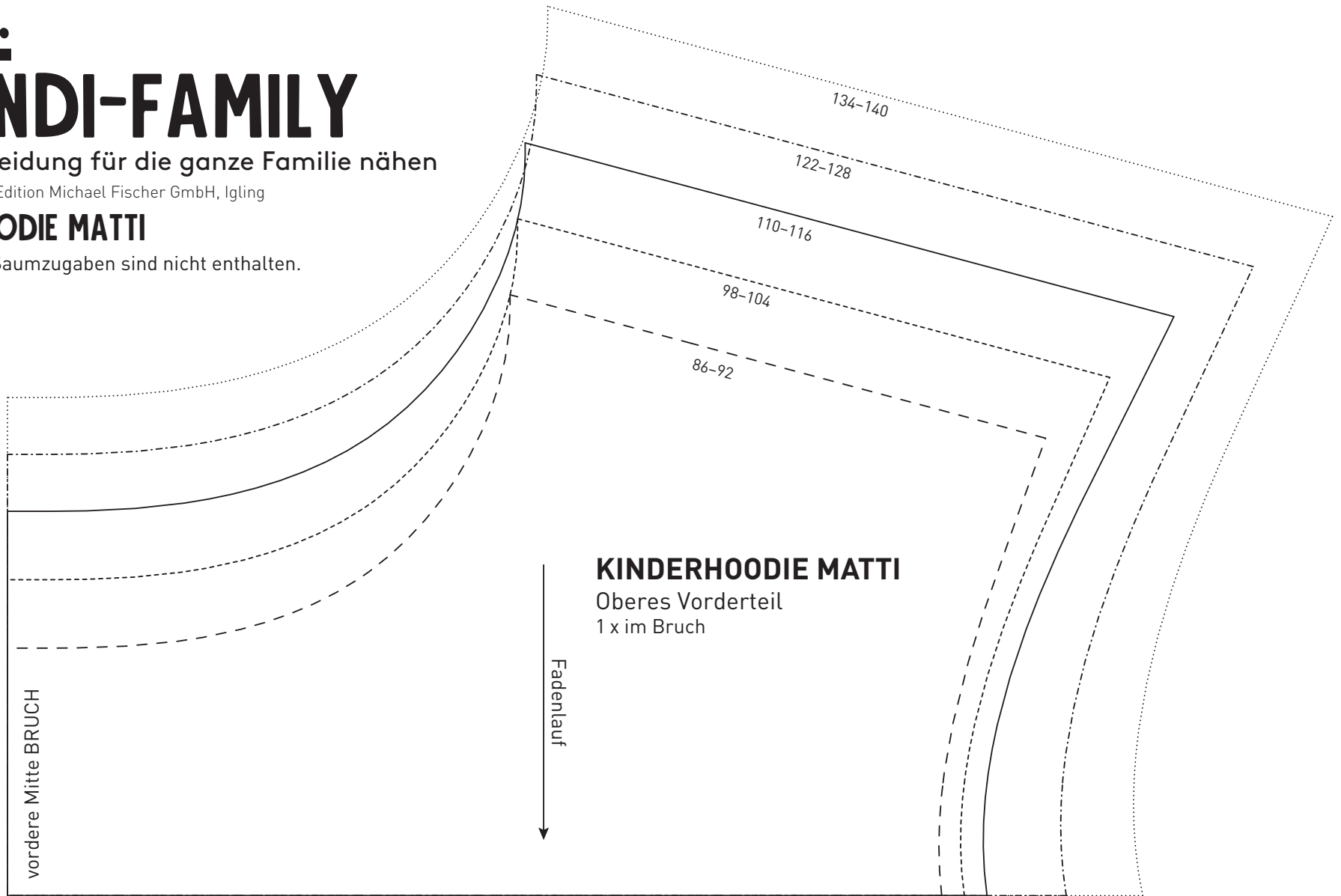
SKANDI-FAMILY

Lieblingskleidung für die ganze Familie nähen

Alle Rechte bei ©Edition Michael Fischer GmbH, Igling

KINDERHOODIE MATTI

Die Naht- und Saumzugaben sind nicht enthalten.



A

1

134-140

122-128

110-116

98-104

86-92

vordere Mitte BRUCH

Fadenlauf
↓

KINDERHOODIE MATTI

Unteres Vorderteil

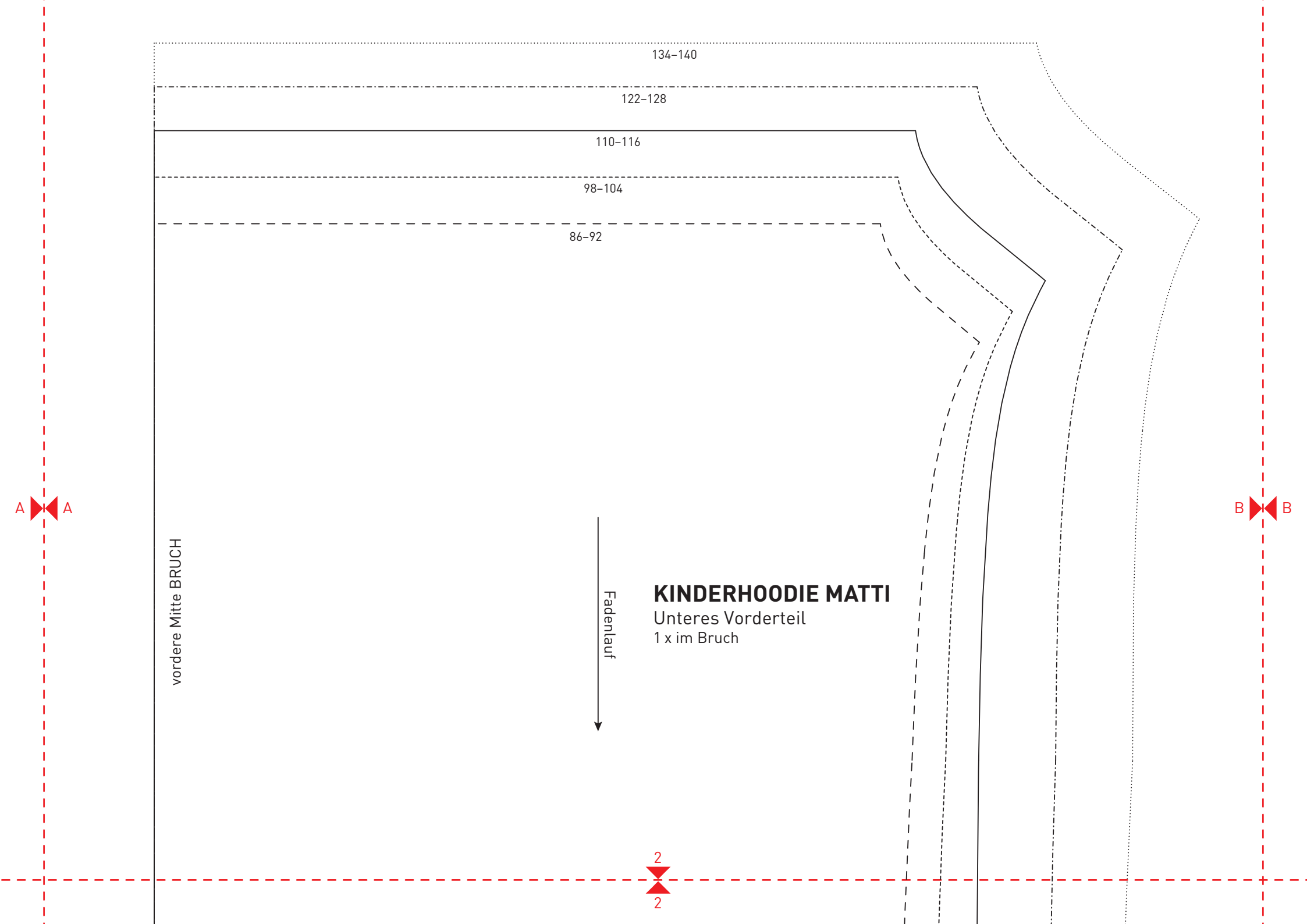
1 x im Bruch

2

2

A A

B B



B



B

134-140

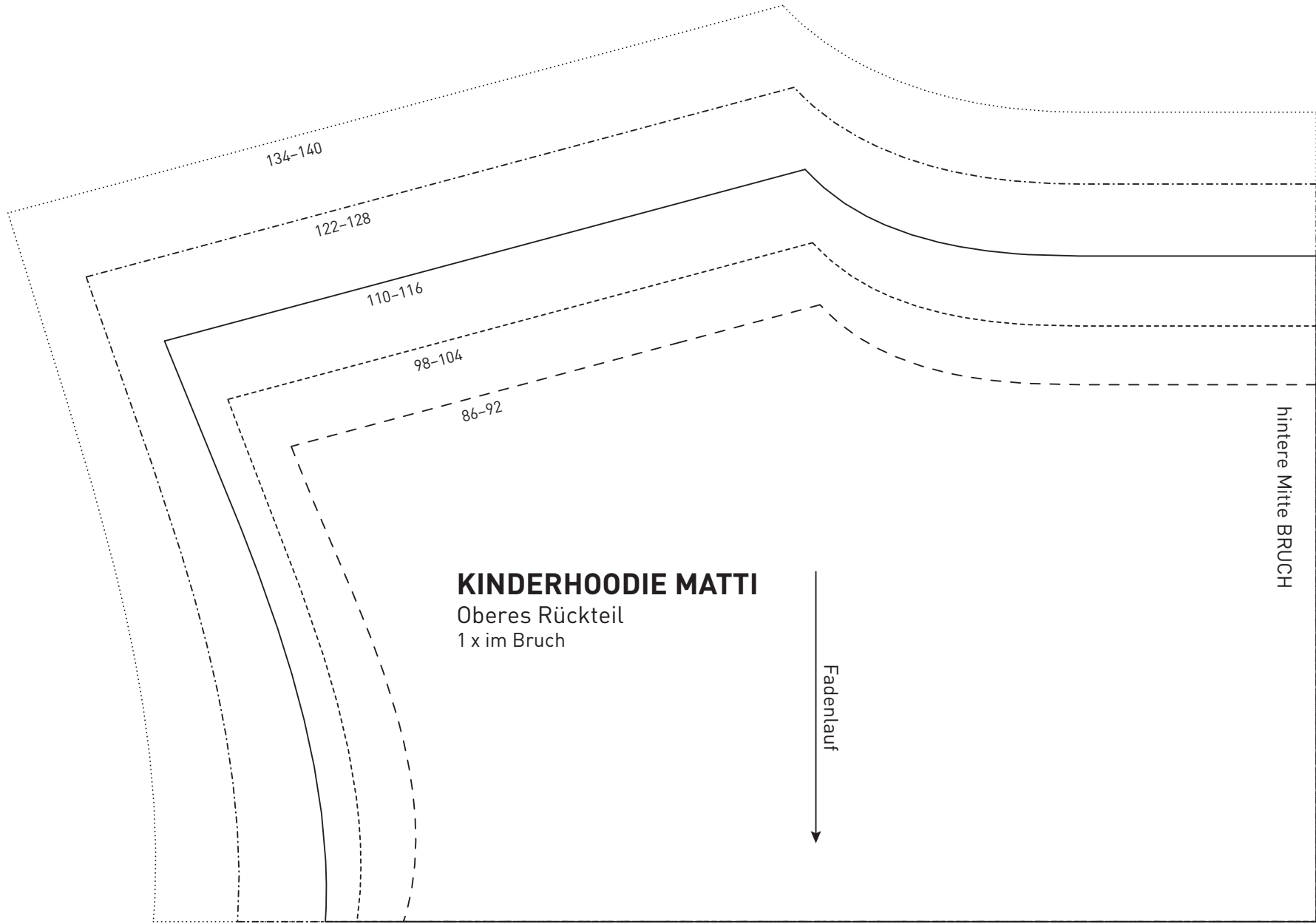
122-128

110-116

3

3

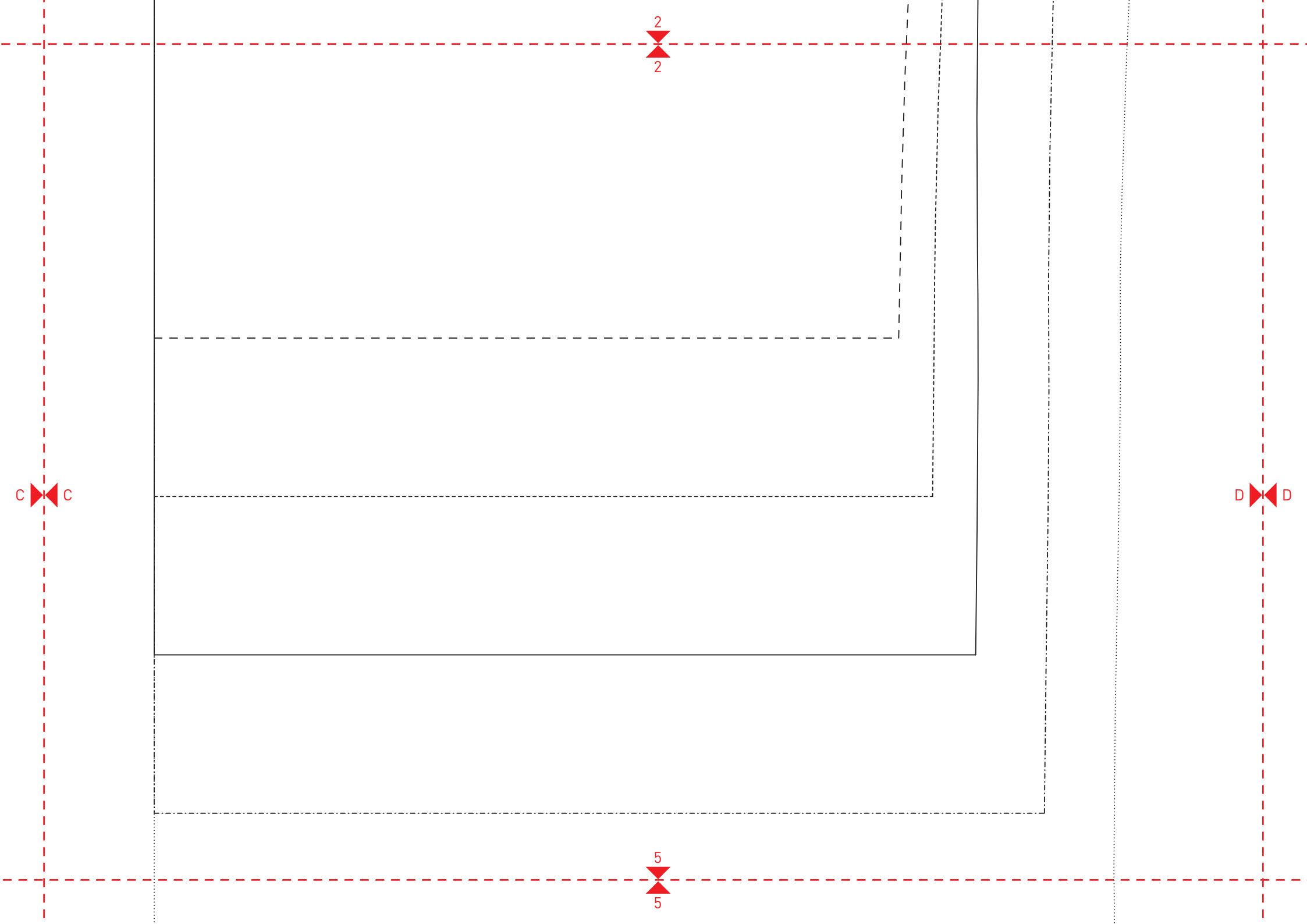




1
1

C C

4
4



3

3

98-104

86-92

Teilungsnah
vorn+hinten

Mitte BRUCH

D

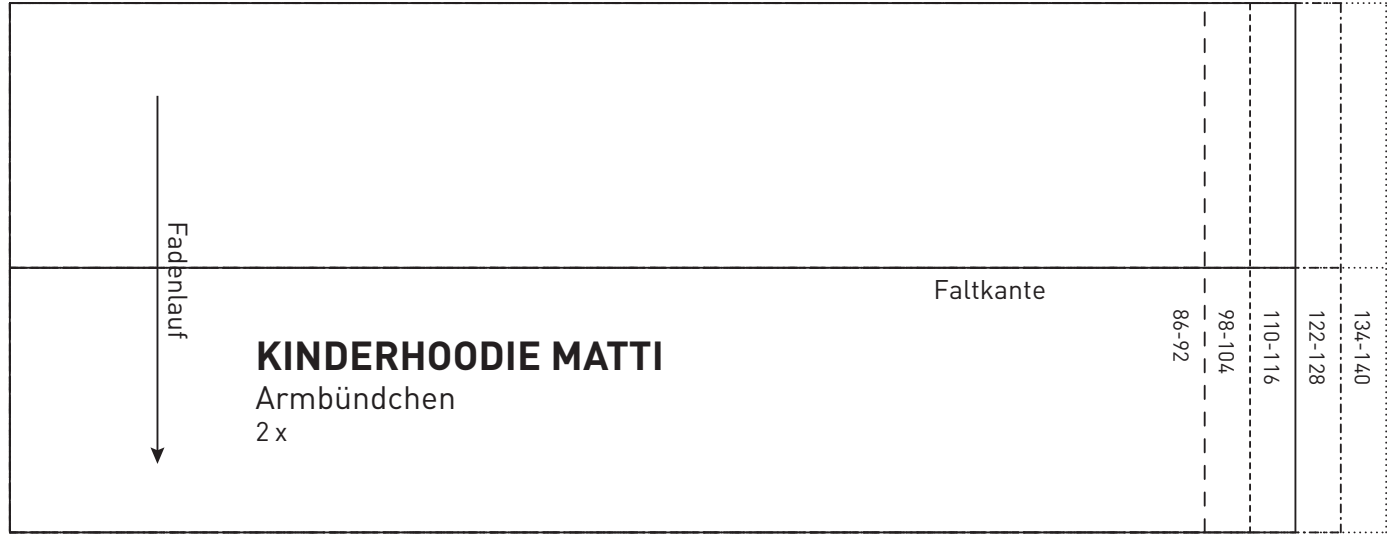
KINDERHOODIE MATTI

Ärmel
2 x im Bruch

6

6

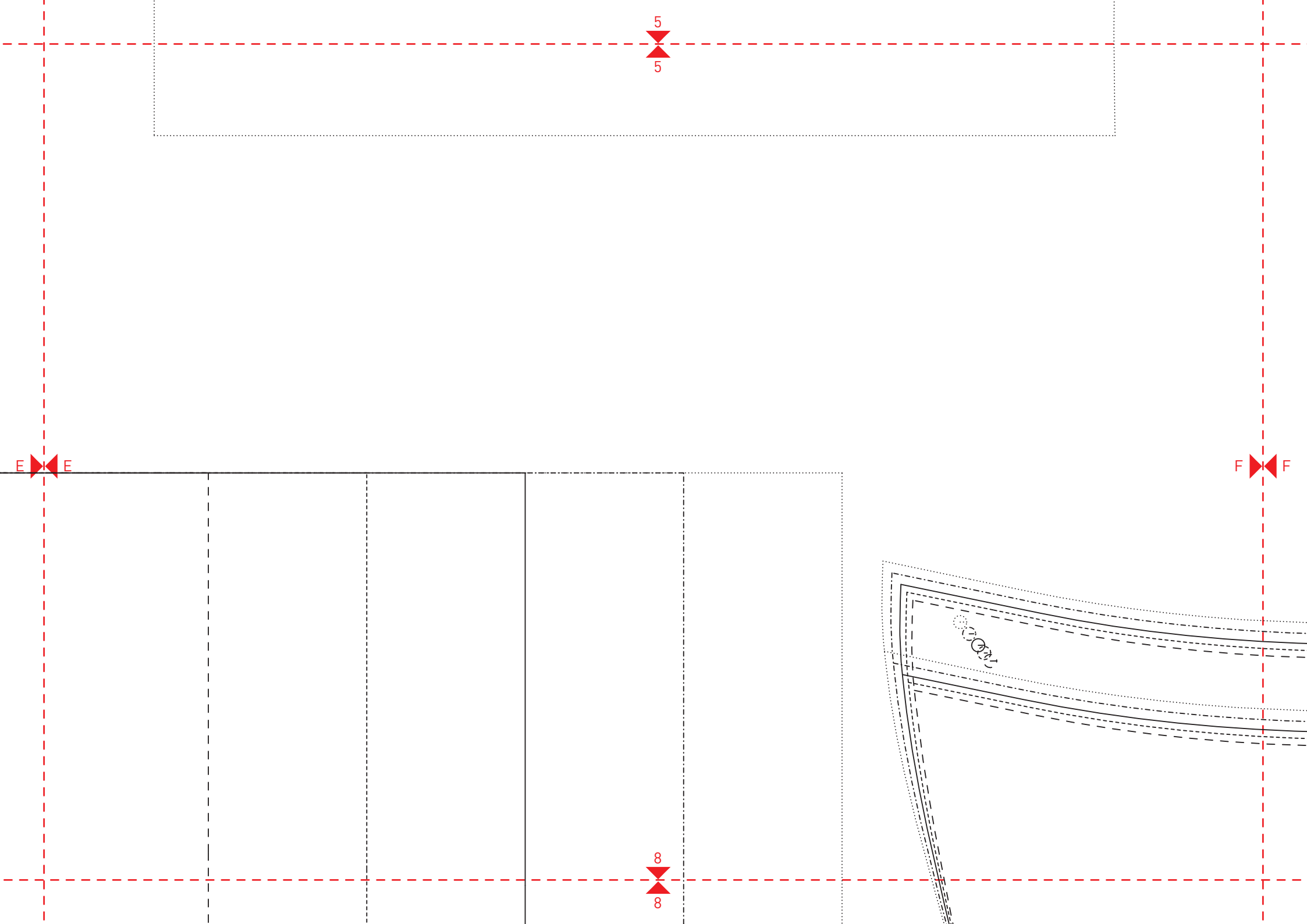
4
4

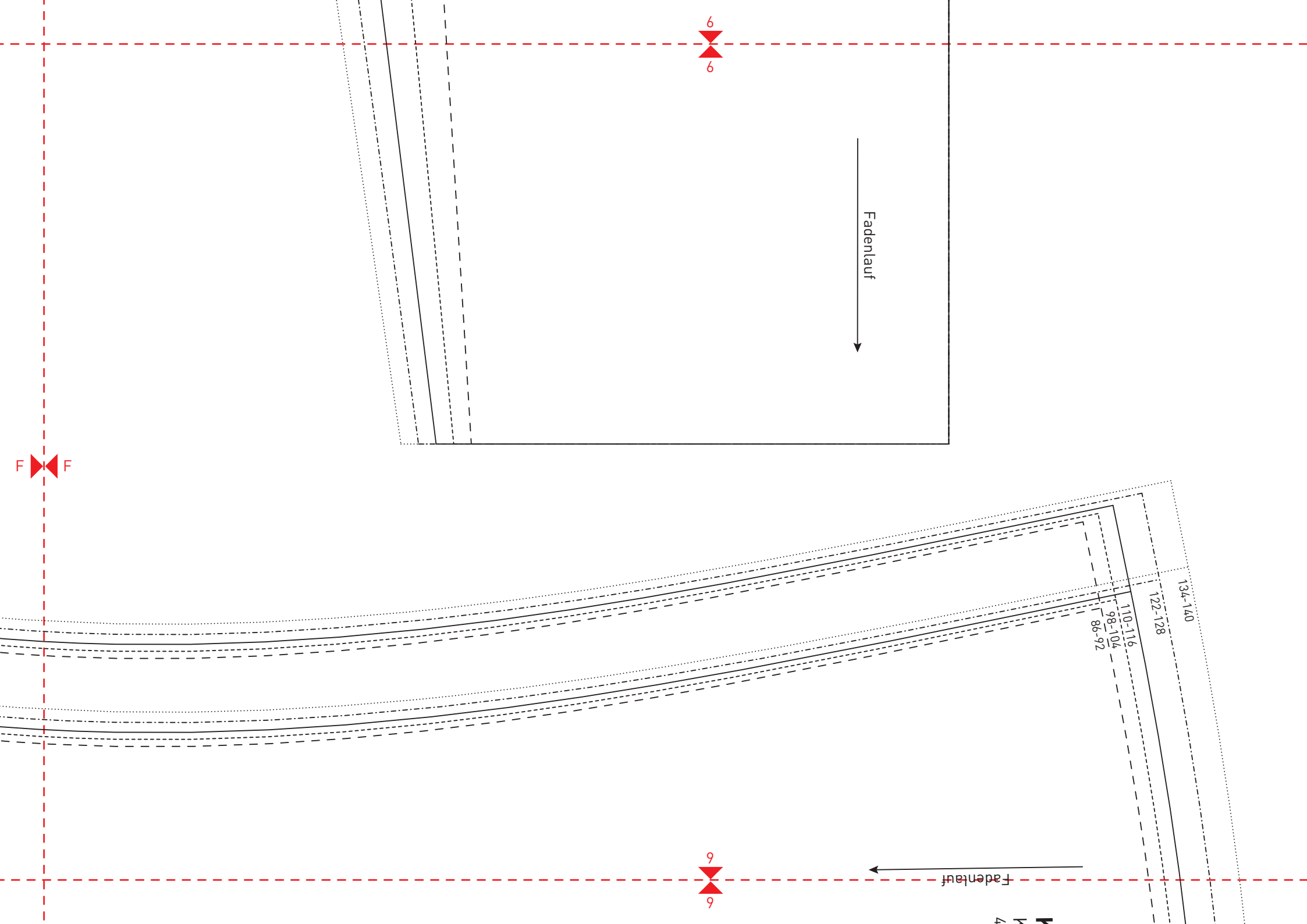


E E

hintere Mitte BRUCH

7
7





134-140

122-128

110-116

98-104

86-92

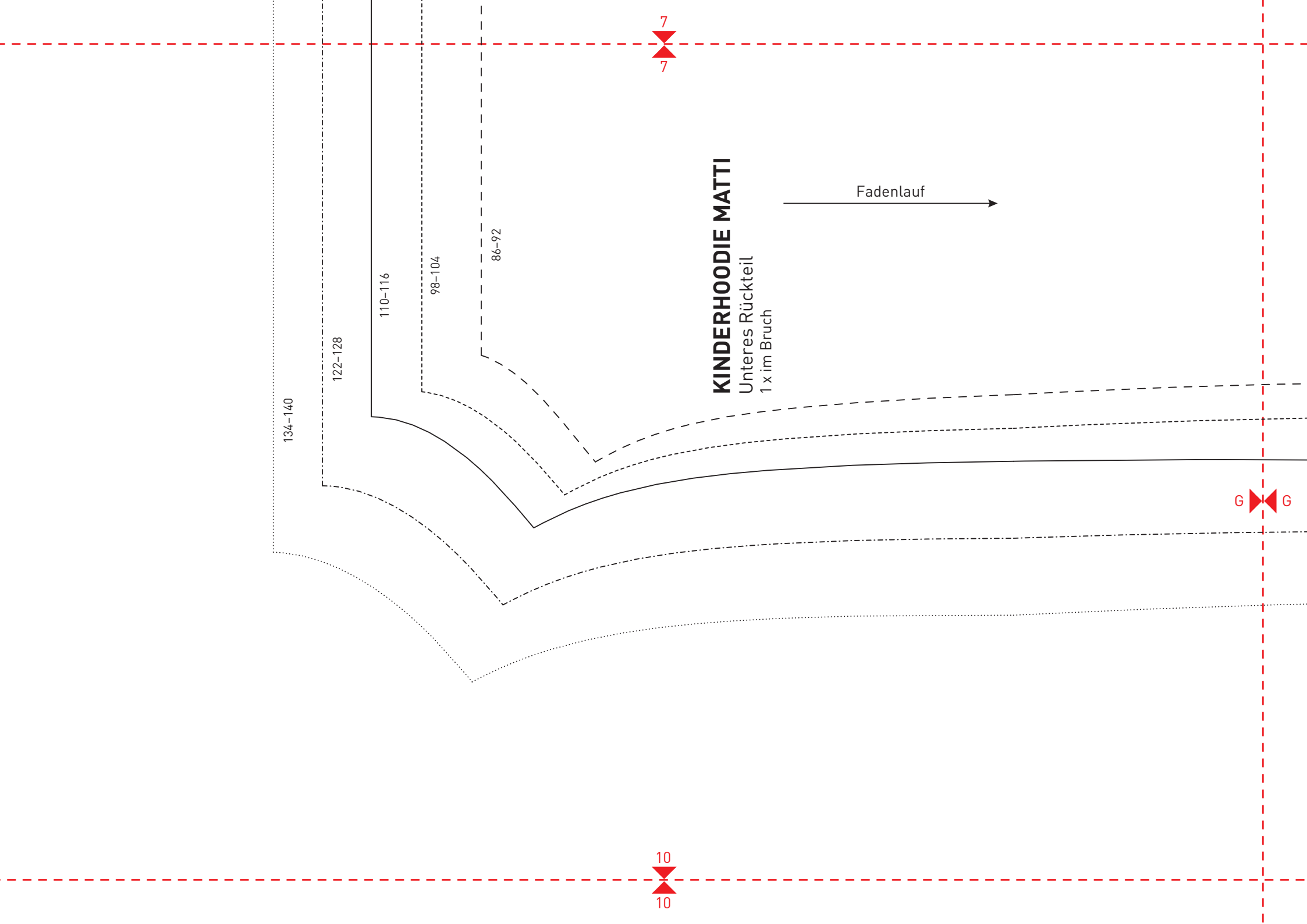
KINDERHOODIE MATTI
Unteres Rückteil
1 x im Bruch

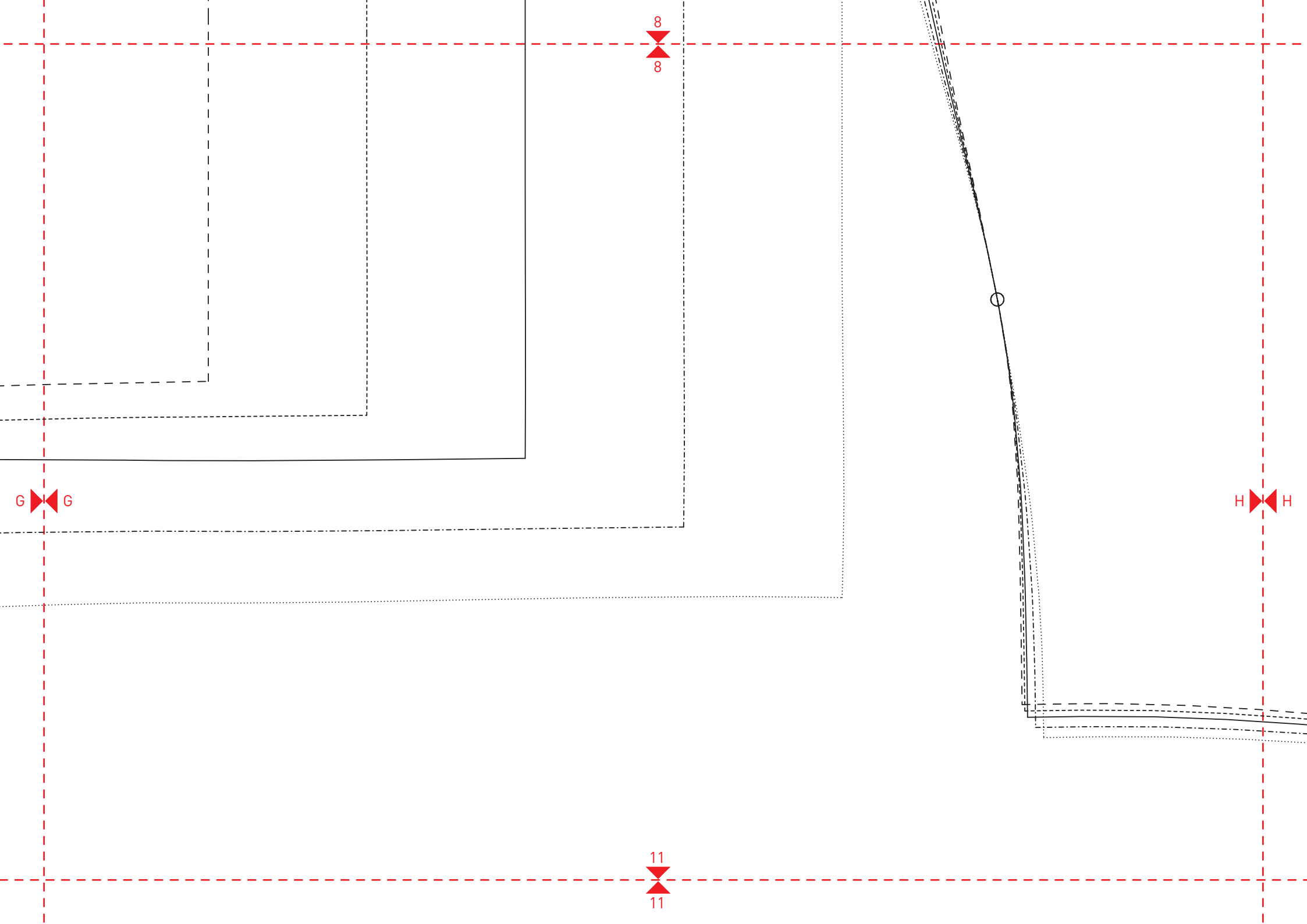
Fadenlauf

7
7

10
10

G G





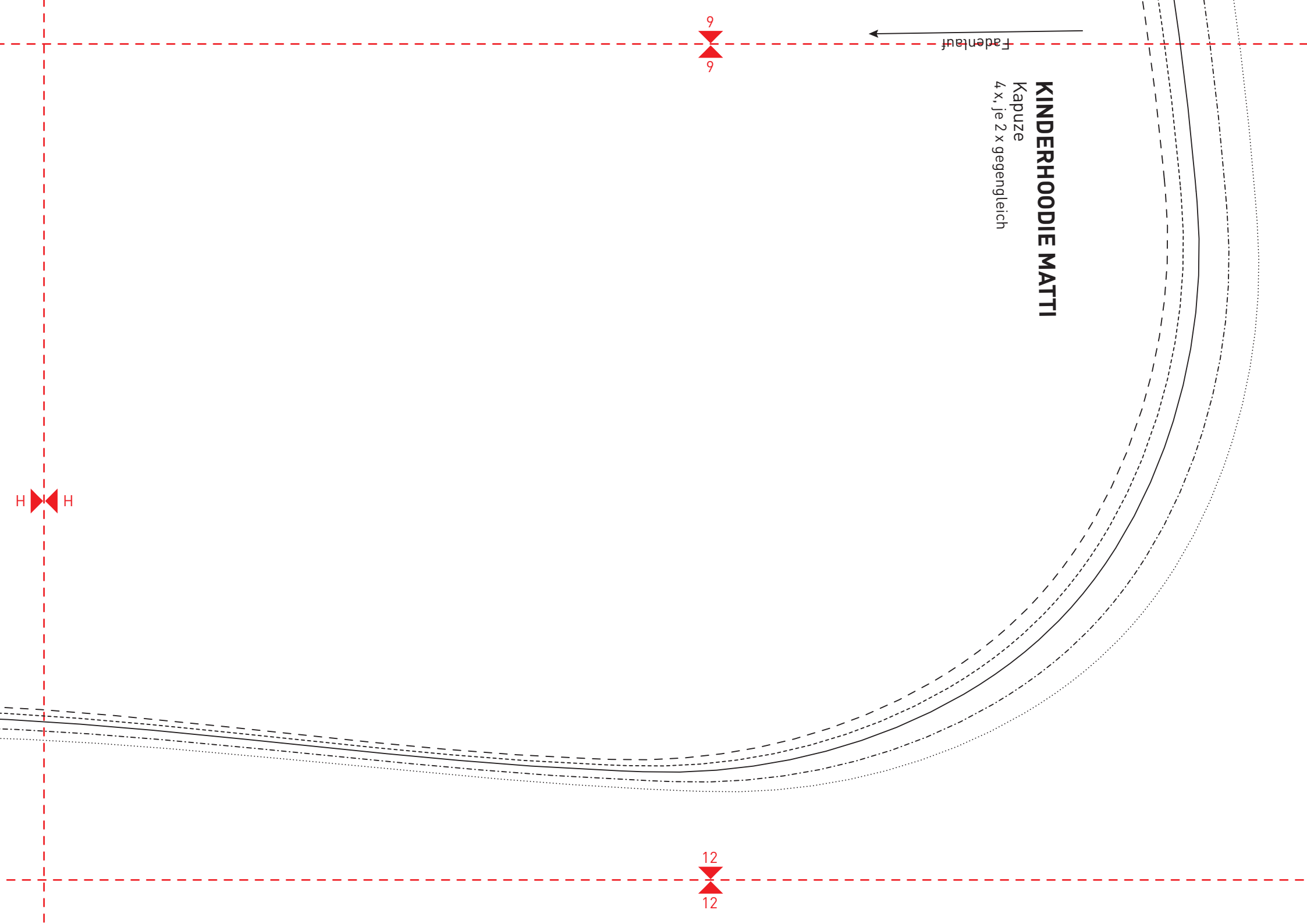
KINDERHOODIE MATTI
Kapuze
4 x, je 2 x gegengleich

Fadenlauf ←

6
6

H
H

12
12



10

10

BRUCH

Fadenlauf

KINDERHOODIE MATTI

Saumbündchen

1 x im Bruch

Faltkante

11
11

J J

134-140

122-128

110-116

98-104

86-92

J J